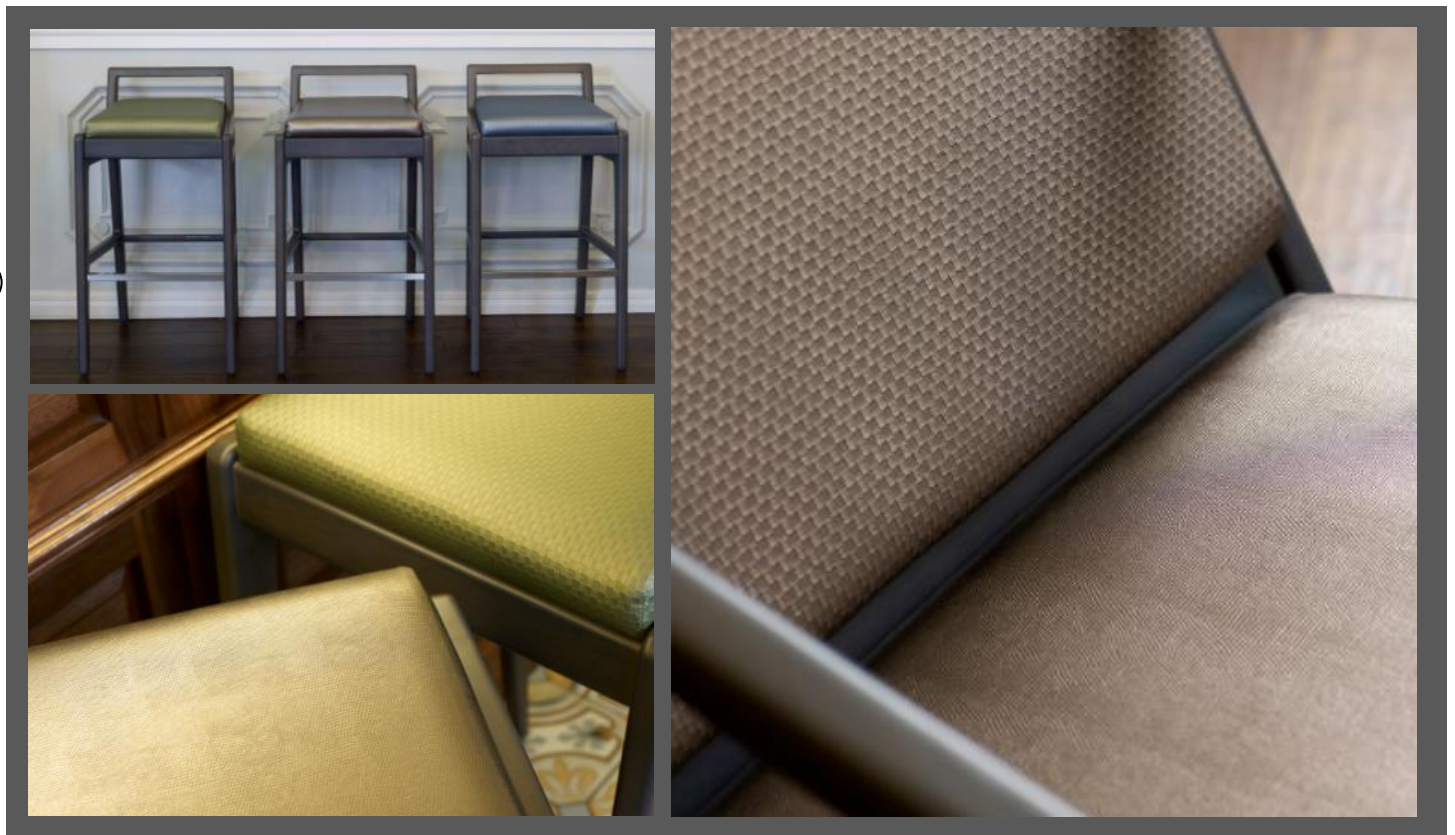


# Bakau

Decorative Faux Leather Collection



Crib 5 Faux Leathers in 2 designs in a range of metallic and matt colours,  
for contract upholstery solutions.

skopos

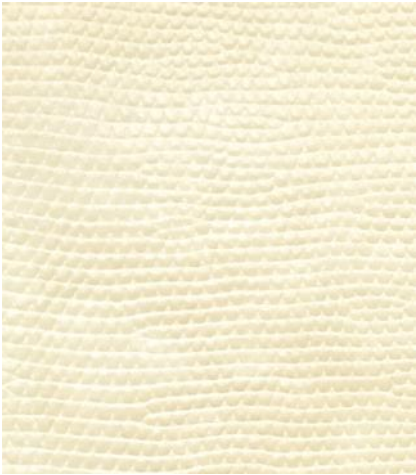
# Bakau

Decorative Faux Leather Collection





**BAKAU by Skopos**



Kadal B1 Tusk



Satomi B1 Limestone



Kadal B3 Armadillo



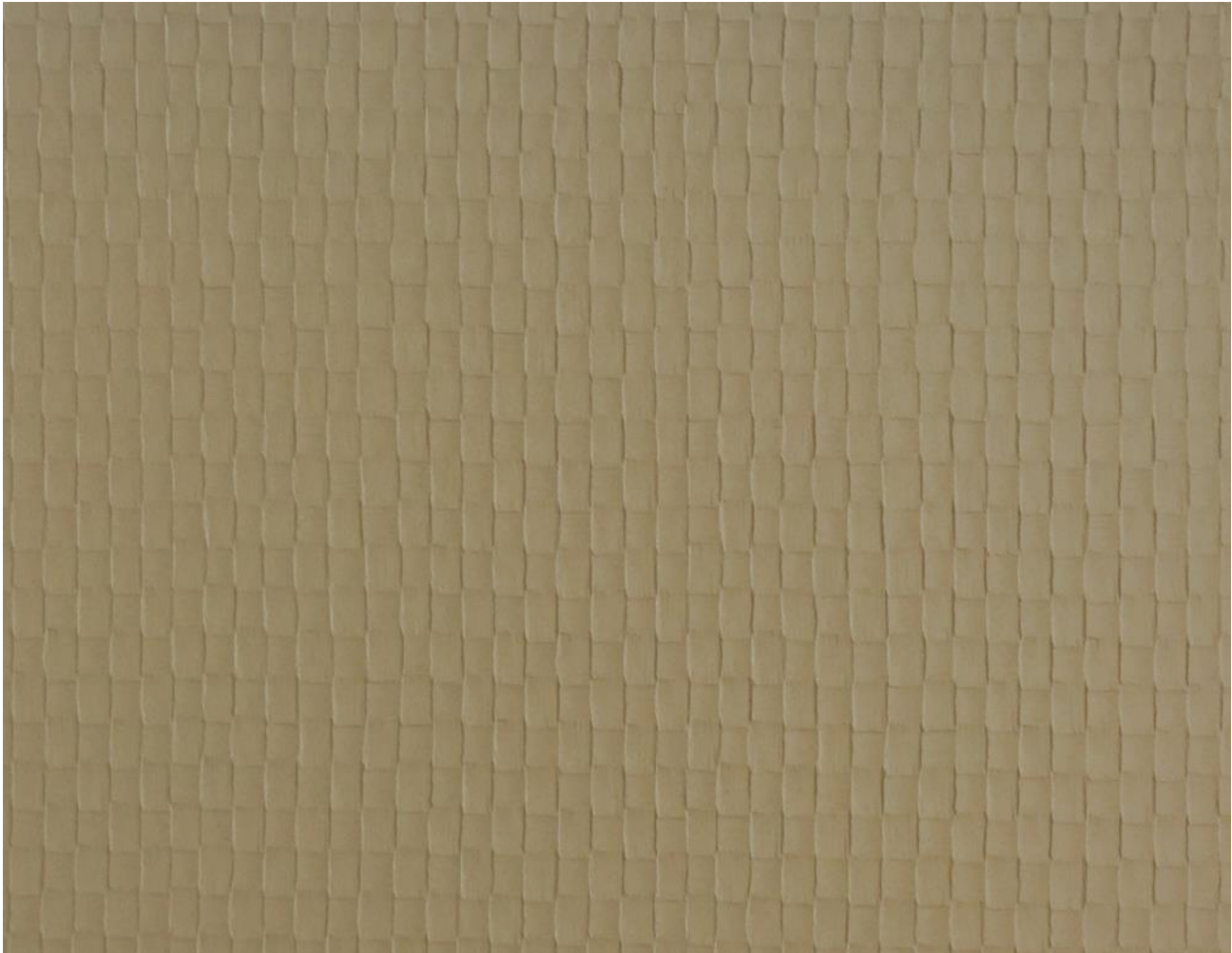
Satomi B2 Pumice



Kadal B2 Bone



Satomi B9 Ash



Satomi B3 Clay



**BAKAU by Skopos**



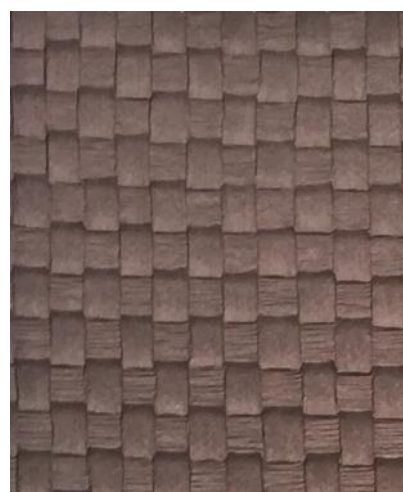
Satomi B5 Ember



Satomi B12 Scorpion



Kadal B5 Midas



Satomi B12 Passion Flower



Kadal B4 Platinum



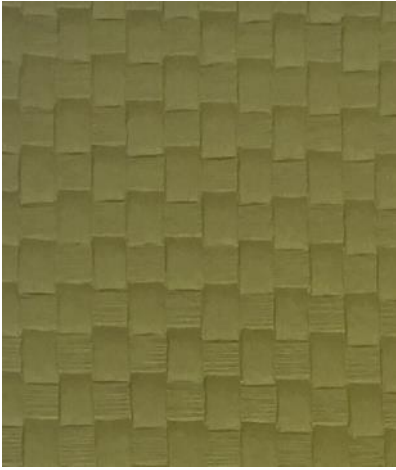
Satomi B10 Galena



Kadal B6 Tigertail



## BAKAU by Skopos



Satomi B7 Caiman



Kadal B9 Komodo



Satomi B6 Mantis



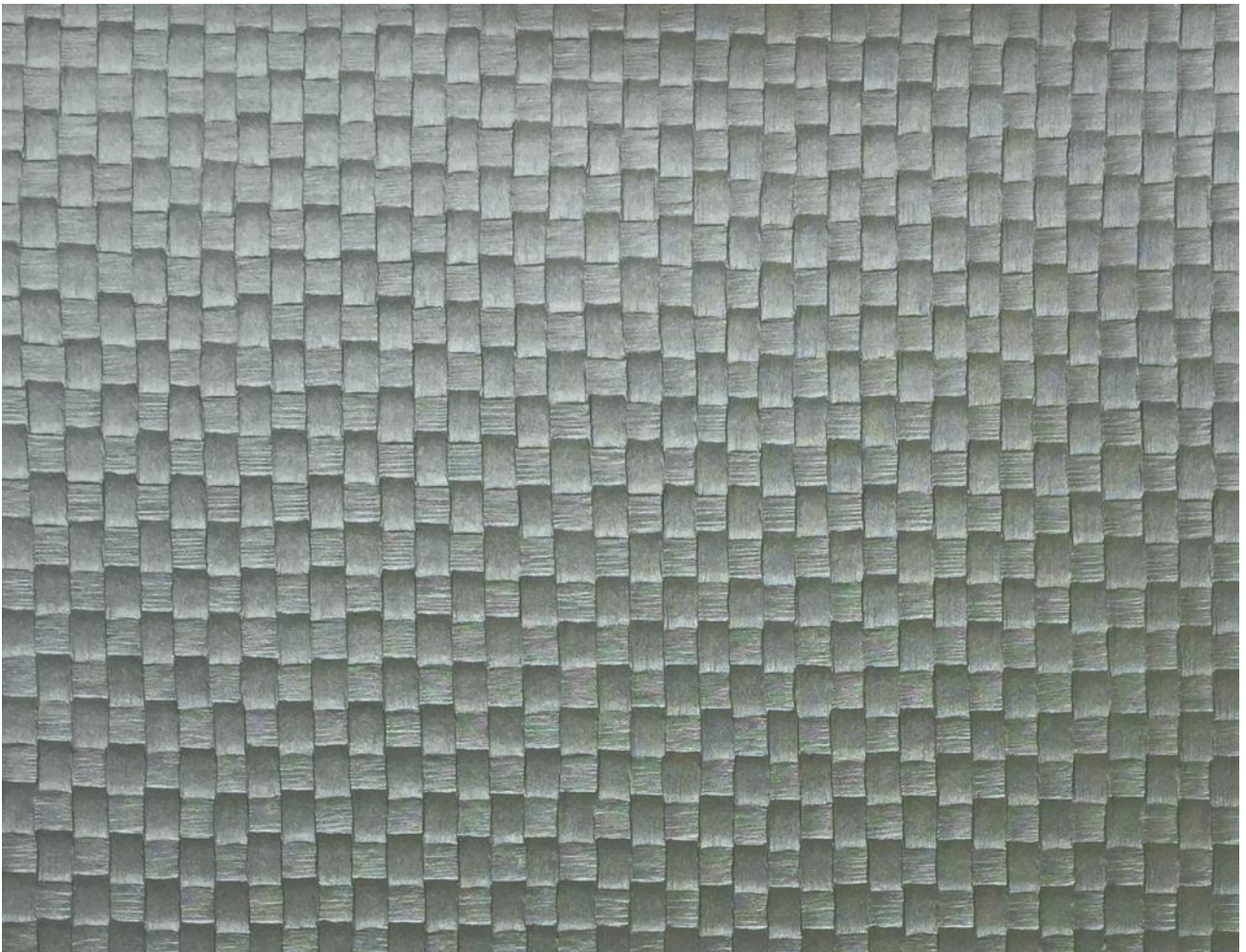
Kadal B8 Stingray



Satomi B4 Mercury



Satomi B15 Carbon



Satomi B8 Azurite

# Bakau

## SPECIFICATIONS

DESIGN	COMPOSITION	SUITABLE USE	WEIGHT	WIDTH	REPEAT	CLEANING
DESSIN	COMPOSITION	UTILISATION	POIDS	LARGEUR	RACCORD	ENTRETIEN
DESIGN	ZUSAMMENSETZUNG	VERWENDUNG	GEWICHT	BREITE	PAPPORT	PFLEGE
DISEGNO	COMPOSIZIONE	UTILIZZO	PESO	LARGHEZZA	RAPPORTO	MANUTENZIONE
DISEÑO	COMPOSICION	USO	PESO	ANCHO	REPETICION	LAVADO
Kadal	1.6% PU, 78.2% PVC, 10.1% P, 10.1% V		640gsm	140cm	0cm	
Satomi	1.6% PU, 78.2% PVC, 10.1% P, 10.1% V		640gsm	140cm	0cm	

The fabrics in this collection benefit from an antimicrobial finish.

## TESTING

DESIGN	CURTAIN FR	UPHOLSTERY FR	UPHOLSTERY GRADE	BEDDING FR
DESSIN	RIDEAUX FR	GARNITURE FR	QUALITE DE GARNITURE	COUCHAGE FR
DESIGN	VORHANG FR	BEZUGSSTOFF FR	BEZUGSSTOFFQUALITAT	BETTZEUG FR
DISEGNO	TENDA FR	IMBOTTITE FR	MATINDALE TEST	COPRILETTI FR
DISEÑO	CORTINA R	TAPICERA IG	GRADO TAPICERIA	ROPA DE CAMA IG
	BS5867 Type B	BS5852 Crib 5	BS7176 Low &	BS7177
	USA NFPA 701 #1	EN10231 1+2		IMO FTPC Part 9
	IMO FTPC Part 7	USA NFPA 260		
	French M1	IMO FTPC Part 8		
	Italian Class 1	✓		
	German B1	✓		
	✓	✓		
Kadal	n/a	✓	100,000	n/a
Satomi	n/a	✓	100,000	n/a



### Cleaning process

Regularly use a soft brush or vacuum to remove surface dust and marks. For more stubborn dirt use a damp microfibre cloth and water, working in a circular motion. Do not rub vigorously as this may damage the surface. Do not machine wash. Avoid any contact with bleach based cleaning agents as this can cause significant damage to the fabric.

Bakau fabrics are not suitable for piping.

This product is not suitable for use in spa or swimming pool areas where contact with chlorine is possible.

**SALES OFFICE & EXPRESS SAMPLES SERVICE** Tel: + 44 (0) 1924 436666 Fax: + 44 (0) 1924 454575 Mon - Thurs 8.15am to 5.00pm, Fri 8.15am to 3.45pm  
**SKOPOS FABRICS LTD** Head office, Studio & Showroom, Providence Mills, Earlsheaton, Dewsbury, West Yorkshire WF12 8HT, UK Tel: + 44 (0) 1924 465191  
 Fax: + 44 (0) 1924 454575 e-mail: sales@skopos.co.uk web: www.skoposfabrics.com We have sales representatives throughout the world.  
 Please telephone + 44 (0) 1924 436666 for details of your nearest Agent.

NB: Digital colour swatch for colour reference only. Sample cutting must be referred to prior to specification.

It is the contractor's responsibility to ensure all cleaning instructions are passed onto the end user.

All copyright, design rights and intellectual property rights existing in our designs and products and in the images, text and design of this pattern card will remain the property of Skopos Fabrics Ltd. Any infringement of these rights is actionable in law and will be pursued vigorously.

We are constantly striving to improve the quality of our products and services, also legislation, standards and test methods may dictate change within the lifetime of this pattern card: We therefore reserve the right to alter our specifications accordingly. Please refer to our current price list or telephone our sales desk for confirmation of current specifications.

**THIS CARD REMAINS THE PROPERTY OF SKOPOS FABRICS LTD. PLEASE DO NOT DISPOSE OF THIS CARD, IT CAN BE RECYCLED. PLEASE CONTACT SKOPOS FOR COLLECTION.**

skopos fabrics LTD.

