

BEAU

Flame Retardant Contract Fabrics



Beautiful, Decadent Flame Retardant Velvets for Upholstery and Drapery

From the ACCENTS range by Skopos

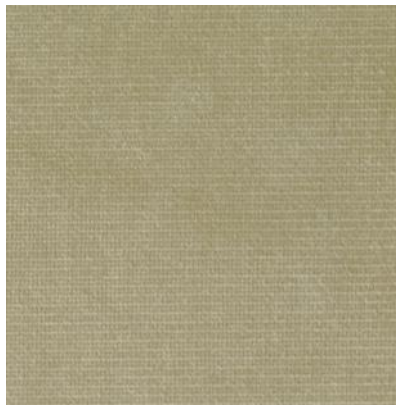


skopos

From the Accents Range by Skopos



B15 Shell



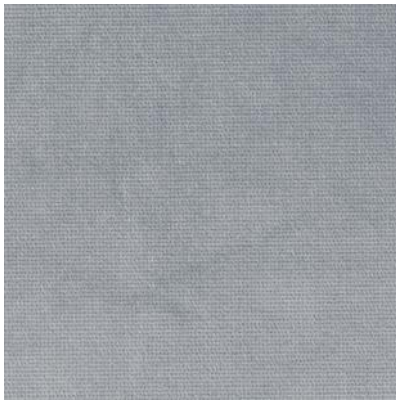
B1 Feather



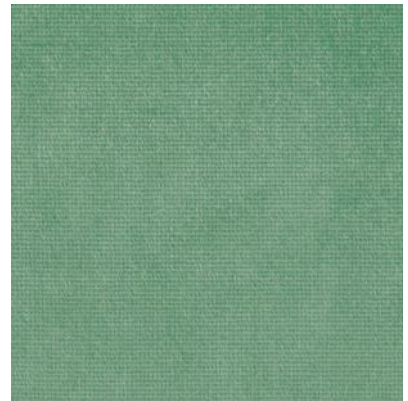
B3 Pepper



B12 Zinc



B8 Moonlight



B6 Mineral



B9 Cyan



B10 Denim



B11 Tide

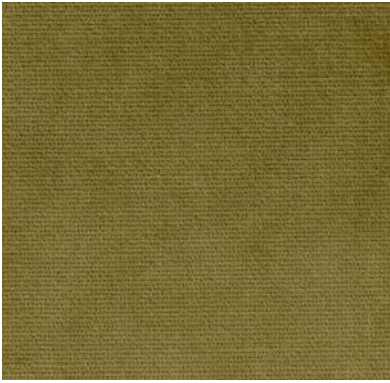


B5 Smoke

From the Accents Range by Skopos



B2 Doe



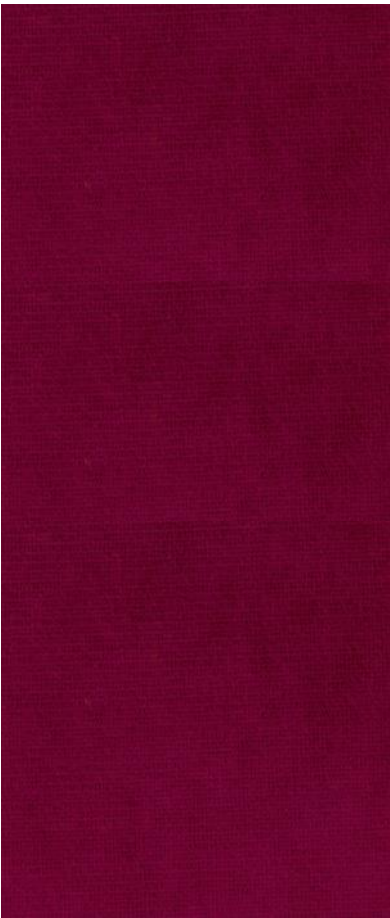
B18 Lichen



B7 Linden



B4 Mustard



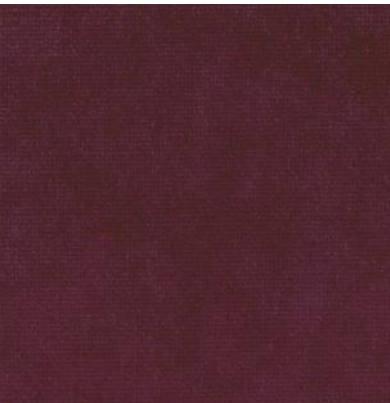
B19 Raspberry



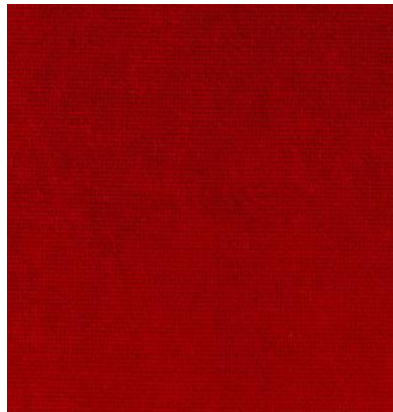
B14 Petal



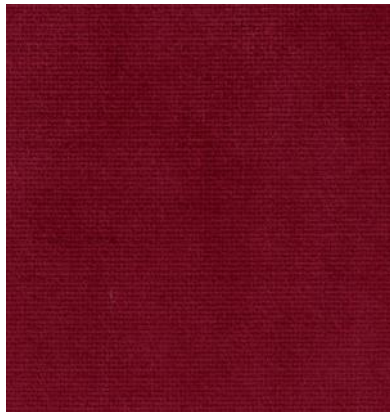
B20 Blaze



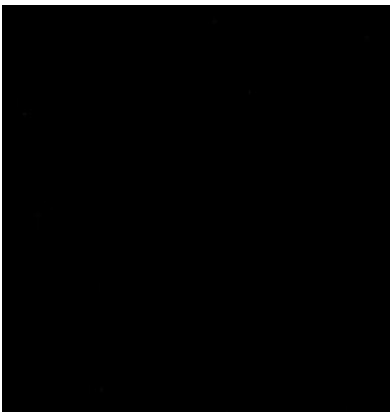
B17 Iris



B13 Scarlet



B21 Syrah



B16 Raven

BEAU

SPECIFICATIONS

DESIGN	COMPOSITION	SUITABLE USE	WEIGHT	WIDTH	REPEAT	CLEANING
DESSIN	COMPOSITION	UTILISATION	POIDS	LARGEUR	RACCORD	ENTRETIEN
DESIGN	ZUSAMMENSETZUNG	VERWENDUNG	GEWICHT	BREITE	PAPPORT	PFLEGE
DISEGNO	COMPOSIZIONE	UTILIZZO	PESO	LARGHEZZA	RAPPORTO	MANUTENZIONE
DISENO	COMPOSICION	USO	PESO	ANCHO	REPETICION	LAVADO
Beau	100% Trevira CS		400gsm	140cm	0cm	

TESTING

DESIGN	CURTAIN FR	UPHOLSTERY FR	UPHOLSTERY GRADE	BEDDING FR
DESSIN	RIDEAUX FR	GARNITURE FR	QUALITE DE GARNITURE	COUCHAGE FR
DESIGN	VORHANG FR	BEZUGSSTOFF FR	BEZUGSSTOFFQUALITAT	BETTZEUG FR
DISEGNO	TENDA FR	IMBOTTITE FR	MATINDALE TEST	COPRILETTI FR
DISENO	CORTINA R	TAPICERA IG	GRADO TAPICERIA	ROPA DE CAMA IG
Beau	BS5867 Type B USA NFPA 701 #1 IMO FTPC Part 7 French M1 Italian Class 1 German B1	BS5852 Crib 5 EN10231 1+2 USA NFPA 260 IMO FTPC Part 8 Medium Hazzard BS7176 Low &	45,000	BS7175 IMO FTPC Part 9

Cleaning process

Regularly use a soft brush or vacuum to remove surface dust and marks. For more stubborn dirt use a damp microfibre cloth and water, working in a circular motion. Do not rub vigorously as this may damage the surface. Do not machine wash. Avoid any contact with bleach based cleaning agents as this can cause significant damage to the fabric.

SALES OFFICE & EXPRESS SAMPLES SERVICE Tel: + 44 (0) 1924 436666 Fax: + 44 (0) 1924 454575 Mon - Thurs 8.15am to 5.00pm, Fri 8.15am to 3.45pm
SKOPOS FABRICS LTD Head office, Studio & Showroom, Providence Mills, Earlsheaton, Dewsbury, West Yorkshire WF12 8HT, UK Tel: + 44 (0) 1924 465191
 Fax: + 44 (0) 1924 454575 e-mail: sales@skopos.co.uk web: www.skoposfabrics.com We have sales representatives throughout the world.
 Please telephone + 44 (0) 1924 436666 for details of your nearest Agent.

NB: Digital colour swatch for colour reference only. Sample cutting must be referred to prior to specification.

It is the contractor's responsibility to ensure all cleaning instructions are passed onto the end user.

All copyright, design rights and intellectual property rights existing in our designs and products and in the images, text and design of this pattern card will remain the property of Skopos Fabrics Ltd. Any infringement of these rights is actionable in law and will be pursued vigorously.

We are constantly striving to improve the quality of our products and services, also legislation, standards and test methods may dictate change within the lifetime of this pattern card: We therefore reserve the right to alter our specifications accordingly. Please refer to our current price list or telephone our sales desk for confirmation of current specifications.

THIS CARD REMAINS THE PROPERTY OF SKOPOS FABRICS LTD. PLEASE DO NOT DISPOSE OF THIS CARD, IT CAN BE RECYCLED. PLEASE CONTACT SKOPOS FOR COLLECTION.

skopos fabrics LTD.

