

BOUTIQUE 2



skopos
STUDIO

skopos

BOUTIQUE 2: CO-ORDINATING PRINTS FOR CONTRACT INTERIORS

SPECIFICATIONS

DESIGN DESIGN DESIGN DISEGNO DISEGNO	COMPOSITION ZUSAMMENSETZUNG COMPOSIZIONE COMPOSICIÓN	SUITABLE USE UTILISATION VERWENDUNG UTILIZZIO USO	WEIGHT POIDS GEWICHT PESO PESO	WIDTH LARGEUR BREITE LARGHEZZA ANCHO	CLEANING ENTRETIEN PFLEGE MANUTENZIONE LAVADO
P1000	100% Polyester FR (can be washed at 71°)	[Icon]	145gsm	137cm	[Icon]
P11000*	100% Polyester FR (can be washed at 71°)	[Icon]	220gsm	137cm	[Icon]
P11000 Reverse*	100% Polyester FR (can be washed at 71°)	[Icon]	220gsm	137cm	[Icon]
Panama	100% Polyester FR (can be washed at 71°)	[Icon]	240gsm	137cm	[Icon]
Ombra (blinout)*	100% FR Polyester (can be washed at 71°)	[Icon]	260gsm	137cm	[Icon]
Turin	100% FR Polyester	[Icon]	245gsm	137cm	[Icon]
Ashford	100% FR Polyester	[Icon]	270gsm	137cm	[Icon]
Niello (blackout)	100% Polyester + FR blackout coating	[Icon]	260gsm	137cm	[Icon]
Laila (blackout)	100% Polyester + FR blackout coating	[Icon]	375gsm	137cm	[Icon]
Vella Velvet (blackout)	100% Polyester + FR blackout coating	[Icon]	460gsm	135cm	[Icon]
Caserta Velvet	100% FR Polyester	[Icon]	410gsm	137cm	[Icon]
Beau Velvet	100% Trevira CS	[Icon]	400gsm	137cm	[Icon]
Cape WP	100% Polyester face/microporous back, crib 5 FR, SR, waterproof, antimicrobial, breathable	[Icon]	360gsm	137cm	[Icon]
Nereus WP	100% Polyester face/microporous back, crib 5 FR, SR, waterproof, antimicrobial, breathable	[Icon]	400gsm	137cm	[Icon]
Cotswold WP	100% Polyester face/microporous back, crib 5 FR, SR, waterproof, antimicrobial, breathable	[Icon]	430gsm	137cm	[Icon]
Varose Velvet	100% Polyester + crib 5 backcoat	[Icon]	485gsm	137cm	[Icon]
Girona Velvet WP	100% Polyester face/microporous back, crib 5 FR, SR, waterproof, antimicrobial, breathable	[Icon]	500gsm	137cm	[Icon]

* Antimicrobial finish available
For details of Stalom, Marmotte and Orelle upholstery fabrics please see website.
Printed designs are available on base-cloths below.

TESTING

DESIGN DESIGN DESIGN DISEGNO DISEGNO	CURTAIN FR RIDEAUX FR VORHANG FR TENDA FR CORTINA FR	UPHOLSTERY FR GARNITURE FR BEZUGSSTOFF FR IMBOTTITE FR TAPICERIA IG	UPHOLSTERY GRADE QUALITE DE GARNITURE BEZUGSSTOFFQUALITÄT MARTINDALE TEST GRADO TAPICERIA	BEDDING FR DOUCHAGE FR BETTZEUG FR COPRILETTI FR ROPA DE CAMA IG
	BS 5867 Type B BS 5867 Type C USA NFPA 701F1 IMO FTPC Part 7 FRENCH MT ITALIAN CLASS 1 GERMAN B1 BS6852 Crib 5 EN1021.1+2 USA NFPA 260 IMO FTPC Part B BS7176 Low & Medium Hazard			BS 7175 IMO FTPC Part 9
P1000	✓	✓	N/A	✓
P11000*	✓	✓	N/A	✓
P11000 Reverse*	✓	✓	N/A	✓
Panama	✓	✓	N/A	✓
Ombra (blinout)*	✓	✓	N/A	-
Turin	✓	✓	N/A	✓
Ashford	✓	✓	N/A	✓
Niello (blackout)	✓	✓	N/A	-
Laila (blackout)	✓	✓	N/A	-
Vella Velvet (blackout)	✓	✓	N/A	-
Caserta Velvet	✓	✓	N/A	✓
Beau Velvet	✓	✓	40,000	✓
Cape WP	N/A	✓	50,000	N/A
Nereus WP	N/A	✓	40,000	N/A
Cotswold WP	N/A	✓	50,000	N/A
Varose Velvet	N/A	✓	40,000	N/A
Girona Velvet WP	N/A	✓	40,000	N/A

** Using 50kg FR foam † Using 36kg FR foam
SALES OFFICE & EXPRESS SAMPLES SERVICE Tel: +44 (0) 1924 436666 Mon to Thurs 8.15am to 5.00pm, Fri 8.15am to 3.45pm
SKOPOS FABRICS LTD Head Office, Studio & Showroom, Providence Mills, Earlsheaton, Dewsbury, West Yorkshire WF12 8HT, UK
Tel: +44 (0) 1924 465191 | email: sales@skopos.co.uk | web: www.skoposfabrics.com
We have sales representation throughout the world, please telephone +44 (0) 1924 436666 for details of your nearest Agent.

NB: Slight variations in colour, width and weight are inevitable between production batches. Cuttings should be submitted for colour matching.
It is the contractor's responsibility to ensure all cleaning instructions are passed onto the end user.

All copyright, design rights and intellectual property rights existing in our designs and products and in the images, text and design of this pattern card will remain the property of Skopos Fabrics Ltd. Any infringement of these rights is actionable in law and will be pursued vigorously.

We are constantly striving to improve the quality of our products and services, also legislation, standards and test methods may dictate change within the lifetime of this pattern card. We therefore reserve the right to alter our specifications accordingly. Please refer to our current price list or telephone our sales desk for confirmation of current specifications.

THIS CARD REMAINS THE PROPERTY OF SKOPOS FABRICS LTD. PLEASE DO NOT DISPOSE OF THIS CARD, IT CAN BE RECYCLED.
PLEASE CONTACT SKOPOS FOR COLLECTION.

THIS SHADECARD HAS BEEN PRODUCED ON BOARD FROM SUSTAINABLE SOURCES.

skopos fabrics LTD.





Fete
SFE05 Lemon Curd



Arboretum
SAR01 Pebble Beach



Fete
SFE10 Tarn



Arboretum
SAR08 Driftwood



Koshi
SK11 Falling Star



Rafter
SRA03 Humbug



Koshi
SK07 Pond



Rafter
SRA02 Caramel



Hedgerow
SHR01 Crows Nest



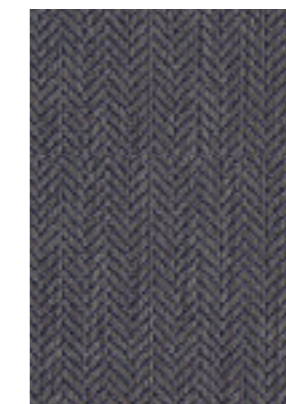
Hedgerow
SHR04 Babbling Brook



Slalom
CD75 Siskin



Orelle
CD55 Lynx



Slalom
C11 Cadet



Marmotte
C2 Lark



Fete
SFE04 Apple



Arboretum
SAR05 Sherwood



Fete
SFE11 Bunting
Shown at 50% scale



Arboretum
SAR11 Mandarin



Koshi
SK05 Wasabi



Rafter
SRA06 Wheatgrass



Koshi
SK08 Woodpecker



Rafter
SRA09 Rayleigh



Hedgerow
SHR05 Briar



Hedgerow
SHR11 Rosehip



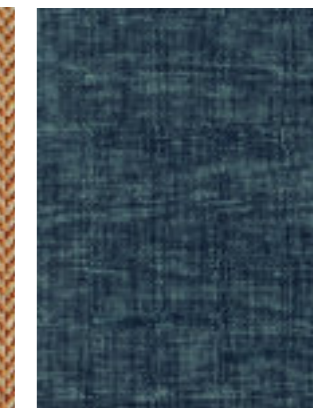
Slalom
CD74 Olive
To scale



Marmotte
CD41 Raffia
To scale



Slalom
CD77 Squirrel
To scale



Marmotte
CD52 Chambray
To scale

BOUTIQUE 2: A SELECTION OF PRINTS FROM skopos STUDIO



Fete
SFE07 Millpond



Koshi
SK03 Parsiev



Rafter
SRA10 Chateau



Arboretum
SAR03 Catmint



Hedgerow
SHR08 Mulberry



Slalom
CD71 Putty
To scale



Orelle
CD60 Acacia
To scale



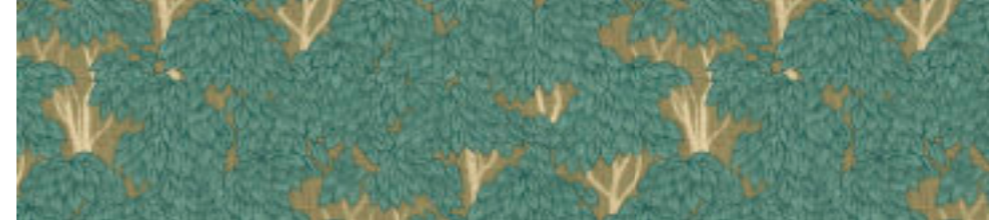
BOUTIQUE 2: A SELECTION OF PRINTS FROM skopos STUDIO



Arboretum
SAR06 Sienna



Fete
SFE12 Chilli Pepper



Hedgerow
SHR07 Menthol



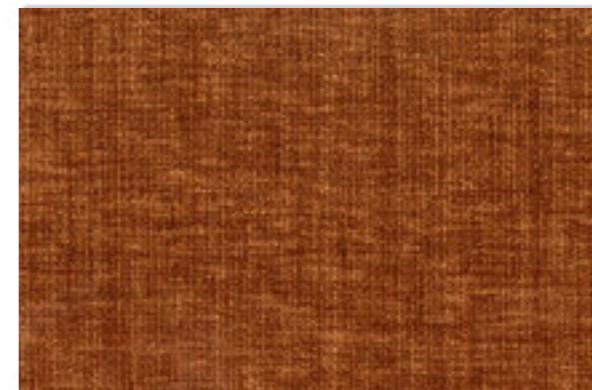
Koshi
SK12 Rising Sun



Rafter
SRA01 Peony



Slalom
C10 Marlin
To scale



Marmotte
CD44 Fox
To scale