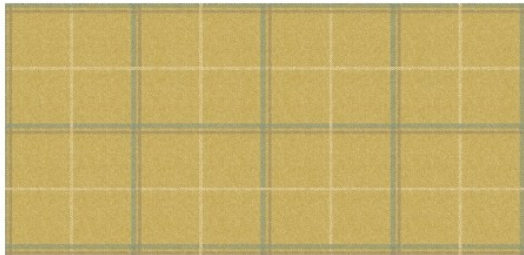


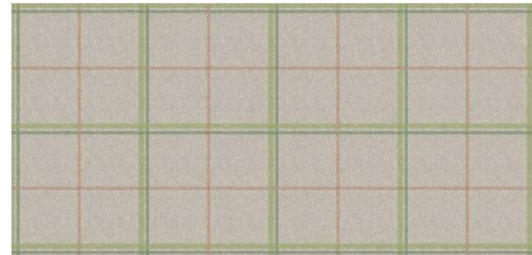
Design: Harlow

Harlow is available in the colourways shown below (lift swatch). For scale, please refer to the attached sample, or order further samples via the website. Vertical Pattern Repeat, 32cm.

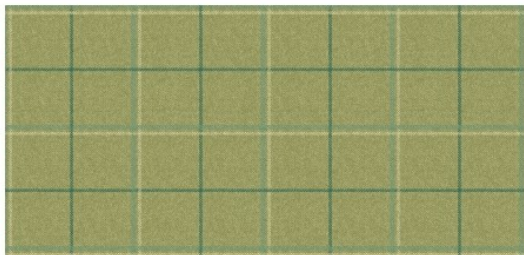
Sample swatch attached shows FS22 Camomile on Capa base-cloth.



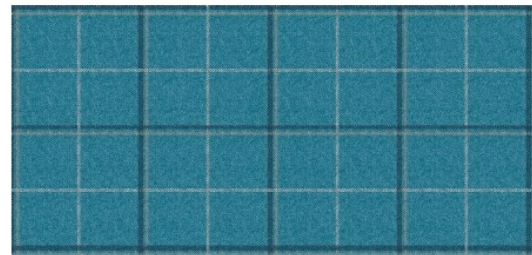
Harlow FS22 Camomile (showing width: 68.5cm)



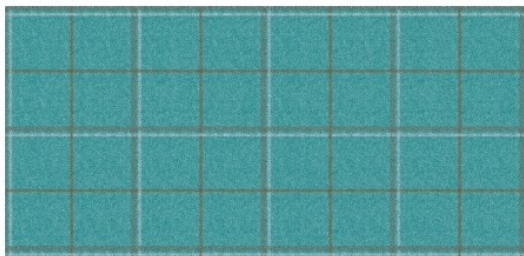
Harlow FS23 Blossom (showing width: 68.5cm)



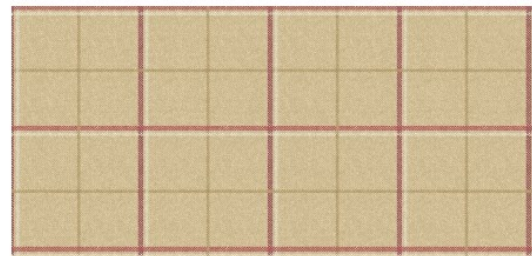
Harlow FS24 Sage (showing width: 68.5cm)



Harlow FS25 Bluebird (showing width: 68.5cm)



Harlow FS26 Brook (showing width: 68.5cm)



Harlow FS27 Tayberry (showing width: 68.5cm)

For exact colour reference, please order a sample: [skoposfabrics.com](https://www.skoposfabrics.com)



skopos

STUDIO

Design: Harlow



Image shows Harlow FS23 Blossom and Wisley FS33 Blossom on cushions and Bowood FS9 Blossom on the curtain.

All of Skopos printed designs are available on a wide choice of base-cloths, including velvets, waterproof upholstery fabrics, blackout fabrics and linen-looks. For details, please refer to our website. For other designs within Flores Silvestri; please review the collection on the website. Skopos can also provide bespoke colour options for a minimum order quantity.

Please contact us for further details.

bespoke
by skopos
skoposfabrics.com/base-cloths



Suitable use:

