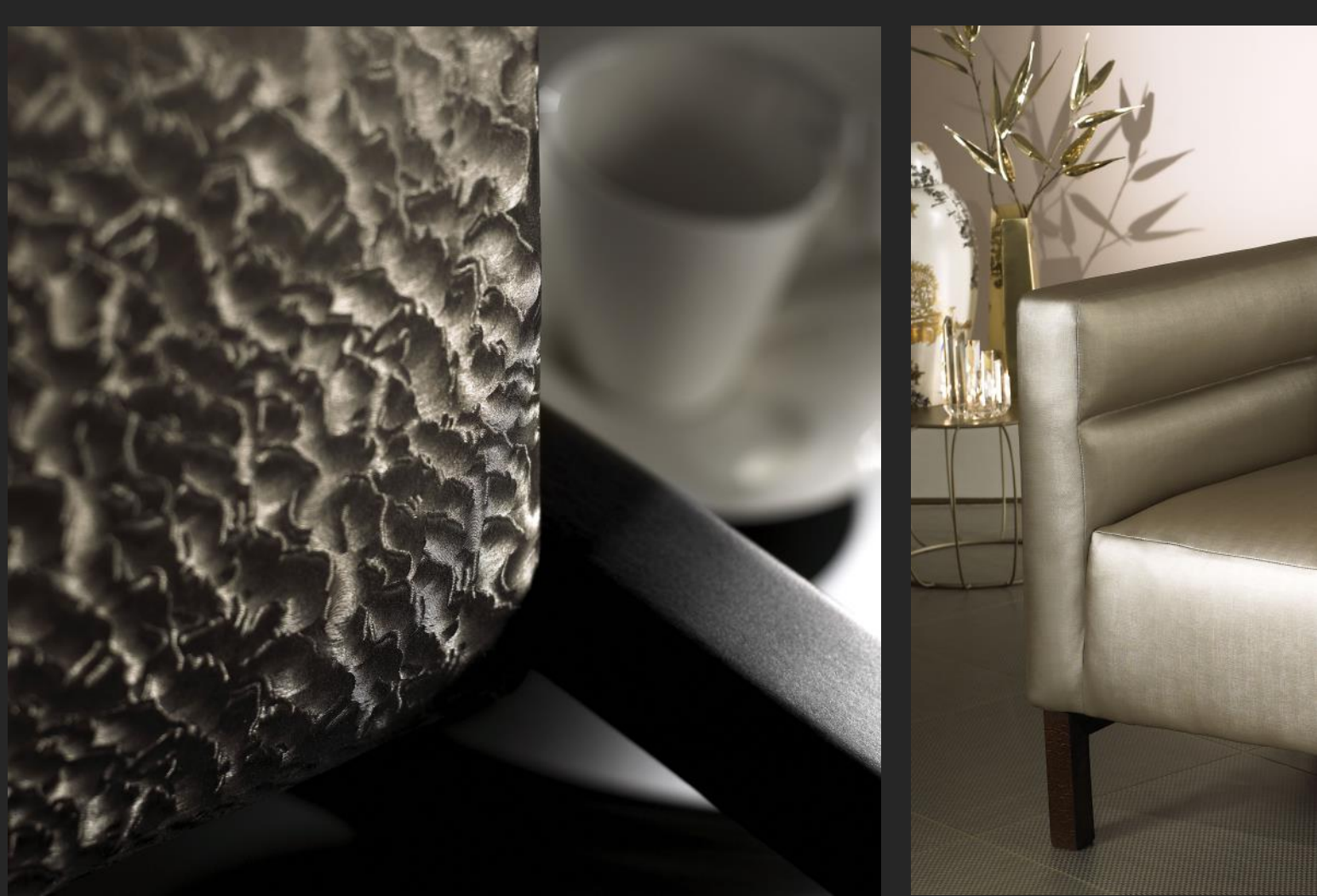


impact

FAUX LEATHERS



A range of statement flame retardant faux leathers available in 3 designs for use across contract interiors. This fabric has the added benefit of an anti-microbial finish.

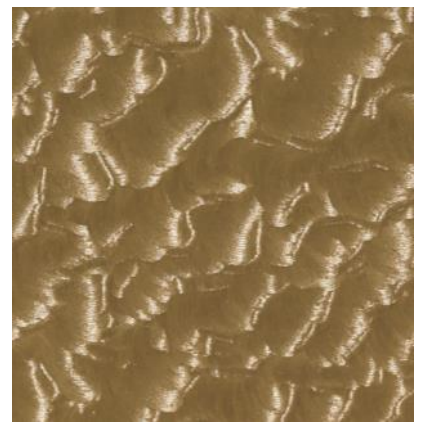
skopos



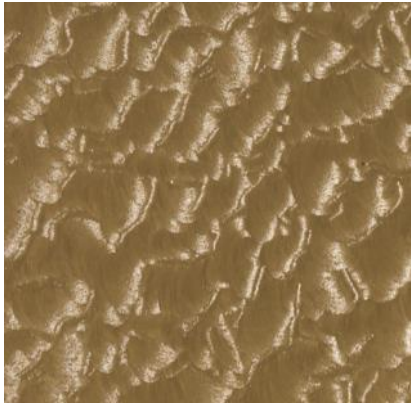
Poise I1 Opal



Verve I2 Steel



Vision I2 Gilt



Vision I3 Pewter



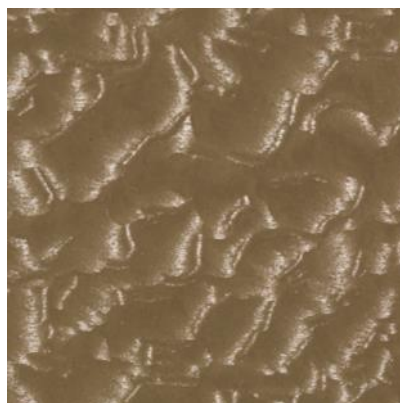
Poise I5 Feldspa



Poise I11 Heliodor



Poise I4 Zinc



Vision I1 Ingot



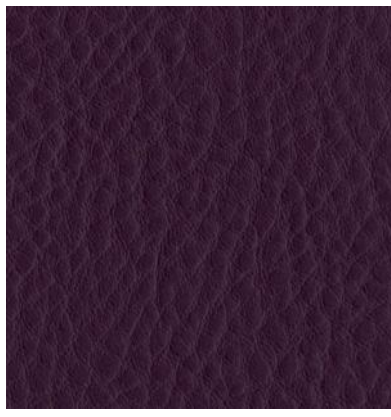
Verve I1 Mica



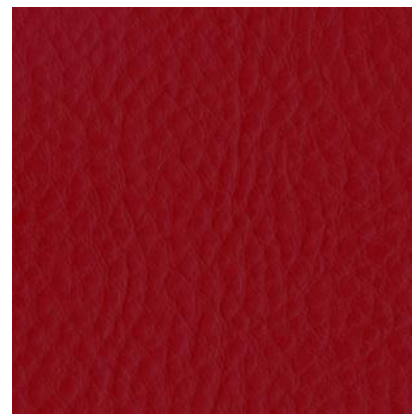
Vision I4 Marcasite



Verve I3 Olivine



Poise I10 Rubelite



Poise I7 Halite



Verve I5 Surge



Poise I14 Navy



Vision I5 Jet



Poise I12 Ammonite



Verve I4 Bronze

SPECIFICATIONS

DESIGN	COMPOSITION	SUITABLE USE	WEIGHT	WIDTH	REPEAT	CLEANING
DESSIN	COMPOSITION	UTILISATION	POIDS	LARGEUR	RACCORD	ENTRETIEN
DESIGN	ZUSAMMENSETZUNG	VERWENDUNG	GEWICHT	BREITE	PAPPORT	PFLEGE
DISEGNO	COMPOSIZIONE	UTILIZZO	PESO	LARGHEZZA	RAPPORTO	MANUTENZIONE
DISEÑO	COMPOSICION	USO	PESO	ANCHO	REPETICION	LAVADO
Poise	74% PU, 15% Polyester. 11% Co		670gsm	140cm	0cm	
Verve	78.2% PVC, 10.1% P, 10.1% V, 1.6% PU		640gsm	140cm	0cm	
Vision	72% PVC, 21% C, 5% P, 2% PU		750gsm	140cm	0cm	

TESTING

Impact faux leathers benefit from an antimicrobial treatment applied during the manufacturing process.

DESIGN	CURTAIN FR	UPHOLSTERY FR	UPHOLSTERY GRADE	BEDDING FR
DESSIN	RIDEAUX FR	GARNITURE FR	QUALITE DE GARNITURE	COUCHAGE FR
DESIGN	VORHANG FR	BEZUGSSTOFF FR	BEZUGSSTOFFQUALITAT	BETTZEUG FR
DISEGNO	TENDA FR	IMBOTTITE FR	MATINDALE TEST	COPRILETTI FR
DISEÑO	CORTINA R	TAPICERA IG	GRADO TAPICERIA	ROPA DE CAMA IG
	BS5867 Type B	BS5852 Crib 5	BS7176 Low &	BS7175
	USA NFPA 701 #1	EN10231 1+2	Medium Hazard	IMO FTPC Part 9
	IMO FTPC Part 7	USA NFPA 260	IMO FTPC Part 8	
	French M1			
	Italian Class 1			
	German B1			
Poise	n/a	✓	✓	✓
Verve	n/a	✓	✓	✓
Vision	n/a	✓	✓	✓



Cleaning process

Wipe clean with warm water. Never use polish, stain remover, solvent or abrasive cleaning cloths. Do not dry clean. Regular cleaning will help the appearance and prolong is useful life. Vacuum regularly. Avoid any contact with bleach based cleaning agents as this can cause significant damage to the fabric.

SALES OFFICE & EXPRESS SAMPLES SERVICE Tel: + 44 (0) 1924 436666 Fax: + 44 (0) 1924 454575 Mon - Thurs 8.15am to 5.00pm, Fri 8.15am to 3.45pm

SKOPOS FABRICS LTD Head office, Studio & Showroom, Providence Mills, Earlsheaton, Dewsbury, West Yorkshire WF12 8HT, UK Tel: + 44 (0) 1924 465191 Fax: + 44 (0) 1924 454575 e-mail: sales@skopos.co.uk web: www.skoposfabrics.com We have sales representatives throughout the world. Please telephone + 44 (0) 1924 436666 for details of your nearest Agent.

NB: Digital colour swatch for colour reference only. Sample cutting must be referred to prior to specification.

It is the contractor's responsibility to ensure all cleaning instructions are passed onto the end user.

All copyright, design rights and intellectual property rights existing in our designs and products and in the images, text and design of this pattern card will remain the property of Skopos Fabrics Ltd. Any infringement of these rights is actionable in law and will be pursued vigorously.

We are constantly striving to improve the quality of our products and services, also legislation, standards and test methods may dictate change within the lifetime of this pattern card: We therefore reserve the right to alter our specifications accordingly. Please refer to our current price list or telephone our sales desk for confirmation of current specifications.

THIS CARD REMAINS THE PROPERTY OF SKOPOS FARICS LTD. PLEASE DO NOT DISPOSE OF THIS CARD, IT CAN BE RECYCLED. PLEASE CONTACT SKOPOS FOR COLLECTION.

skopos fabrics LTD.

