

skopos

MORITZ

from the ACCENTS range by Skopos

SPECIFICATIONS

| DESIGN<br>DESSIN<br>DESIGN<br>DISEGNO<br>DISEÑO | COMPOSITION<br>COMPOSITION<br>ZUSAMMENSETZUNG<br>COMPOSIZIONE<br>COMPOSICIÓN | SUITABLE USE<br>UTILISATION<br>VERWENDUNG<br>UTILIZZO<br>USO | WEIGHT<br>POIDS<br>GEWICHT<br>PESO<br>PESO | WIDTH<br>LARGEUR<br>BREITE<br>LARGHEZZA<br>ANCHO | REPEAT<br>RACCORD<br>RAPPORT<br>RAPPORTO<br>REPETICIÓN | CLEANING<br>ENTRETIEN<br>PFLEGE<br>MANUTENZIONE<br>LAVADO |
|---|--|--|--|--|--|---|
| Bernina crib 5                                  | 100% Polyester + FR backcoating  |  | 520gsm                                     | 137cm  | 1.5cm  |   |
| Caspar crib 5                                   | 100% Polyester + FR backcoating  |  | 430gsm                                     | 137cm  | 12cm   |   |
| Cresta crib 5                                   | 100% Polyester + FR backcoating  |  | 515gsm                                     | 137cm  | 4cm  |   |
| Luge crib 5                                     | 100% Polyester + FR backcoating  |  | 390gsm                                     | 137cm  | 17.5cm   |   |
| Orelle crib 5                                   | 100% Polyester + FR backcoating  |  | 455gsm                                     | 137cm  | 0cm  |   |
| Moritz Designs<br>Waterproof                    | 100% Polyester, SR, Antimicrobial,<br>Waterproof + FR backcoating            |  | as above<br>+ 5gsm                         | 137cm  | as above   |   |

Waterproof and Crib 5 Options available



A collection of 5 upholstery fabric designs from our Accents range. Available with or without waterproof backing, for flexible use across a variety of contract interiors.

TESTING

| DESIGN<br>DESSIN<br>DESIGN<br>DISEGNO<br>DISEÑO | CURTAIN FR<br>RIDEAUX FR<br>VORHANG FR<br>TENDA FR<br>CORTINA FR  | UPHOLSTERY FR<br>GARNITURE FR<br>BEZUGSSTOFF FR<br>IMBOTTITE FR<br>TAPICERA IG | UPHOLSTERY GRADE<br>QUALITÉ DE GARNITURE<br>BEZUGSSTOFFQUALITÄT<br>MARTINDALE TEST<br>GRADO TAPICERIA | BEDDING FR<br>COUCHAGE FR<br>BETTZEUG FR<br>COPRILETTI FR<br>ROPA DE GAMA IG |
|---|---|--|---|--|
|   | BS 5867 Type B<br>USA NFFPA 701#1<br>IMO CTN A471<br>FRENCH M1<br>ITALIAN CLASS 1<br>GERMAN B1<br>BS5852 Crib 5<br>EN1021.1+2<br>IMO UPH A652<br>BS7176 Low & Medium Hazard |  |   | BS 7175  |
| Bernina   | N/A   | ✓  | 40,000  | N/A  |
| Caspar  | N/A   | ✓  | 50,000  | N/A  |
| Cresta  | N/A   | ✓  | 40,000  | N/A  |
| Luge  | N/A   | ✓  | 50,000  | N/A  |
| Orelle †  | N/A   | ✓  | 50,000  | N/A  |

† Due to the random nature of the design striping may occur in the Orelle quality.

#### Cleaning process

- Regular vacuuming and light brushing will help maintain the fabric appearance.
- Wipe clean with damp cloth using warm water for most stains.
- Remove spillages promptly.
- For protein stains, cold water should be used to remove any soiling, then use dilute bleach (5% sodium chlorite) as a useful disinfectant.
- Ensure residue cleaning chemical is removed from the surface.
- Do not machine wash, dry clean or tumble dry.

NB before starting stain removal it is advised to always check the suitability of any cleaning fluid by applying to an area of the fabric out of sight.

**SALES OFFICE & EXPRESS SAMPLES SERVICE** Tel: + 44 (0) 1924 436666 | Fax: + 44 (0) 1924 454575 Mon to Fri 8.30am to 5.00pm  
**SKOPOS FABRICS LTD** Head Office, Studio & Showroom, Providence Mills, Earlsheaton, Dewsbury, West Yorkshire WF12 8HT, UK  
 Tel: + 44 (0) 1924 465191 | Fax: + 44 (0) 1924 454575 | email: sales@skopos.co.uk | web: www.skoposfabrics.com  
 We have sales representation throughout the world, please telephone +44 (0) 1924 436666 for details of your nearest Agent.

NB: Slight variations in colour and width are inevitable between production batches. Cuttings should be submitted for colour matching.

All copyright, design rights and intellectual property rights existing in our designs and products and in the images, text and design of this pattern card will remain the property of Skopos Fabrics Ltd. Any infringement of these rights is actionable in law and will be pursued vigorously.

We are constantly striving to improve the quality of our products and services, also legislation, standards and test methods may dictate change within the lifetime of this pattern card. We therefore reserve the right to alter our specifications accordingly. Please refer to our current price list or telephone our sales desk for confirmation of current specifications.

THIS CARD REMAINS THE PROPERTY OF SKOPOS FABRICS LTD. PLEASE DO NOT DISPOSE OF THIS CARD, IT CAN BE RECYCLED. PLEASE CONTACT SKOPOS FOR COLLECTION.

skopos fabrics LTD.

skopos | mosaic  
by skopos

Skopos Fabrics Ltd - An ISO 9001 registered company



Certificate No: 2588



MORITZ from the Accents Range by Skopos



Luge M1 Agate



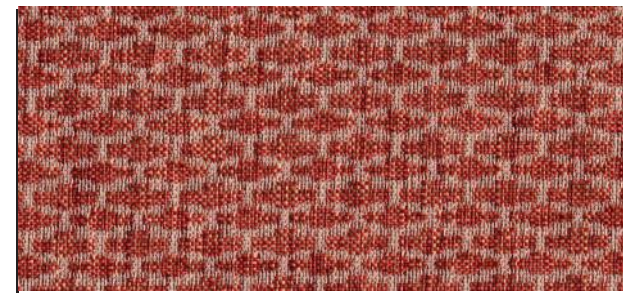
Luge M4 Masai



Caspar M7 Robin



Orelle M12 Pimento



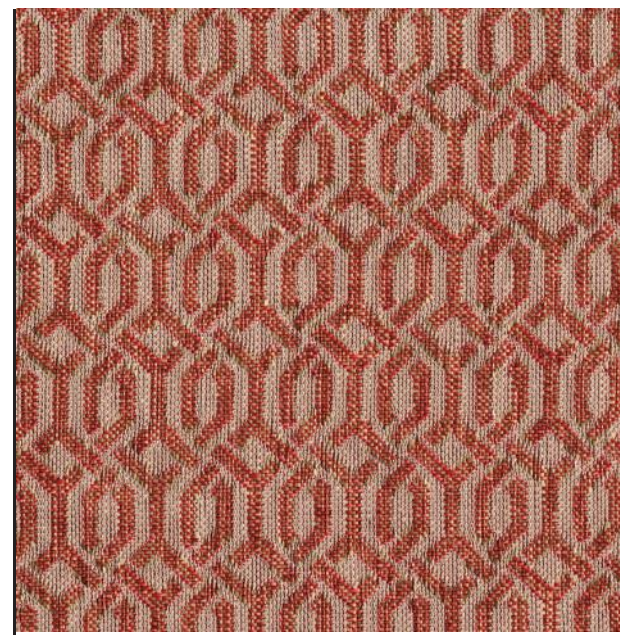
Bernina M5 Pomegranate



Bernina M2 Granite



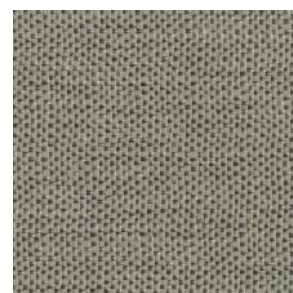
Cresta M1 Teasel



Cresta M3 Cinnabar



Orelle C6 Sile



Orelle C2 Flint

MORITZ from the Accents Range by Skopos



Luge M6 Flint



Luge M7 Wagtail



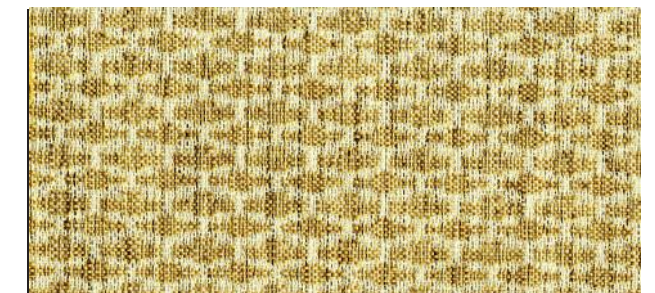
Caspar M3 Goldcrest



Caspar M2 Lead



Cresta M4 Canary



Bernina M3 Lemongrass



Bernina M1 Limestone



Caspar M1 Dolomite



Orelle C1 Timber



Orelle C3 Ferro



MORITZ from the Accents Range by Skopos

MORITZ from the Accents Range by Skopos



Luge M5 Kingfisher



Luge M3 Bluegrass



Luge M2 Gulf



Luge M8 Loam



Caspar M4 Teal



Caspar M5 Azure



Cresta M2 Celeste



Caspar M8 Danube



Bernina M7 Amethyst



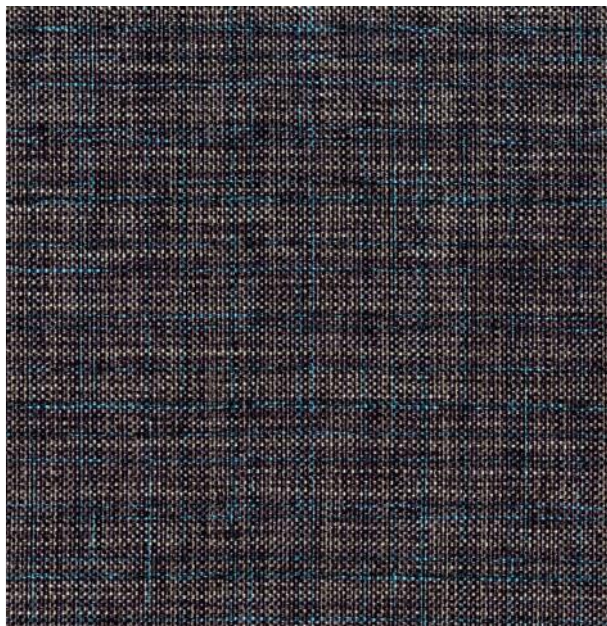
Orelle M11 Cactus



Orelle C7 Aqua



Orelle M13 Whirlpool



Caspar M6 Hummingbird



Bernina M4 Petrol



Orelle C10 Fig



Orelle C8 Logan



Bernina M8 Copper



Bernina M6 Dusk



Cresta M5 Mercury