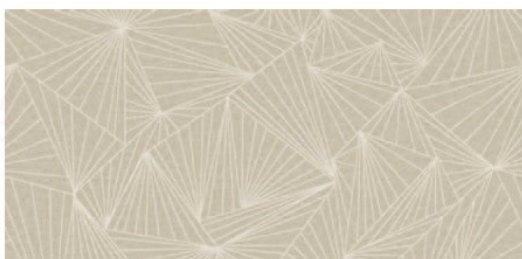


## Design: Shard

Shard is available in the colourways shown below (*lift swatch*). For scale, please refer to the attached sample, or order further samples via the website. Vertical Pattern Repeat, 60cm.

Sample swatch attached shows SS3 Pigeon on P11,000 Reverse base-cloth.



Shard SS1 Canvas (showing width: 68.5cm)



Shard SS2 Dawn (showing width: 68.5cm)



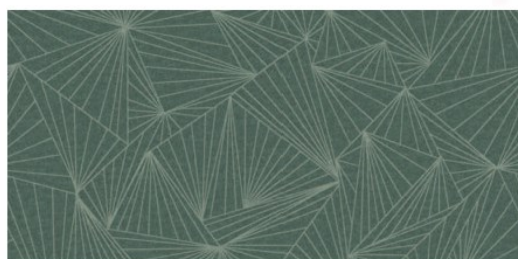
Shard SS3 Pigeon (showing width: 68.5cm)



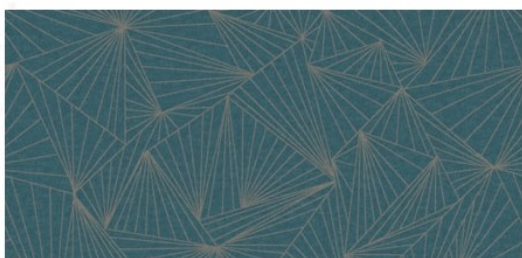
Shard SS4 Hay (showing width: 68.5cm)



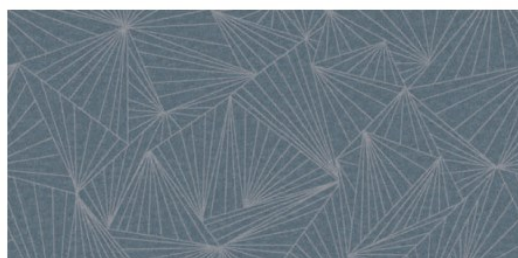
Shard SS5 Ferrous (showing width: 68.5cm)



Shard SS6 Yew (showing width: 68.5cm)



Shard SS7 Waterfront (showing width: 68.5cm)



Shard SS8 Porpoise (showing width: 68.5cm)

For exact colour reference, please order a sample: [skoposfabrics.com](https://www.skoposfabrics.com)



# skopos

**STUDIO**

**Design: Shard**



Image shows Shard SS6 Yew on the sofa.

All of Skopos printed designs are available on a wide choice of base-cloths, including velvets, waterproof upholstery fabrics, blackout fabrics and linen-looks. For details, please refer to our website. Skopos can also provide bespoke colour options for a minimum order quantity. Please contact us for further details.

**bespoke**  
by skopos  
[skoposfabrics.com/base-cloths](https://skoposfabrics.com/base-cloths)



Suitable use:

