



50
skopos
years

50 Years of Design Excellence,
50 Years of Skopos.

Explore our 50th Anniversary Collection.

skoposfabrics.com



Contents

Introduction: How we began	05
January: Duo, Petit Duo and Tetra designs	06
February: Vienna Loop and Spa Days designs	07
March: Ocean Ikat and Atlantic Stripe designs	08
April: Vintage Camelia and Delta designs	09
May: Tea Garden and Interlace designs	10
June: Liana and Chanson designs	11
July: Halcyon Dawn and Foss designs	12
August: Guinevere and Liliun designs	13
September: Absinthe and Fuji designs	14
October: Silenzio and Momentum designs	15
November: Baradaeus Mist and Henrick Stripe designs	16
December: Nivis and Enteka designs	17
Samples Wallet: for your favourite designs	19



50 Years of Design Excellence, 50 Years of Skopos

The early 70's saw the birth of a new textile business in the Yorkshire town of Batley. With design and innovation at the heart of everything, three local art college students came together to build an energetic business, delivering eye-catching printed fabrics into healthcare and hospitality interiors.

The students were influenced by graphics seen in Greek pattern/environments and began developing bold repeating textile prints and handprinting fabrics, on-site in Yorkshire. Deriving from the Greek word for 'purpose' the business became known as Skopos. Designs were hand-made to order and early collections used simple, bold shapes, the perfect backdrop to modern 1970's interior spaces. Mixing colours by hand to deliver an on-trend solution, the Skopos team created dramatic, eye-catching designs that became synonymous with the Skopos Brand.

At this early stage the business made the decision to partner with a company with expertise in flame retardancy fabric treatment, realising the requirement to deliver against certain safety standards for textiles within contract interiors.

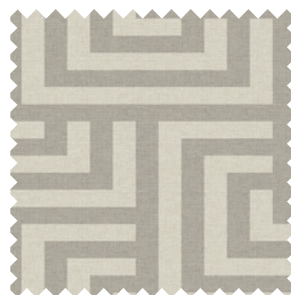
Demand grew in the UK, covering markets including healthcare, hospitality, cruise and ferry and then started to gain momentum overseas with big orders coming in from the Middle East.

2022 marked the celebration of 50 years of Skopos! As a tribute to this milestone, throughout the year, we looked back at some of our favourite designs over this half century. The 50th Anniversary Collection saw some of these authentic landmark designs reborn using contemporary design production techniques. The evolved designs were developed in line with current trends for use within contract interiors today. Each month these 'new' designs were brought to life on our website and samples made available in the usual way.

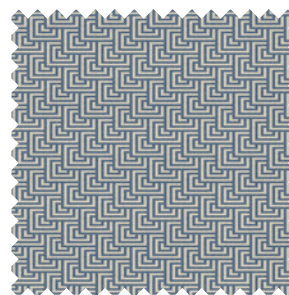
Starting off the Anniversary calendar, our Duo and Tetra designs were originally part of a Skopos range called Deccahedron (Decca being 10 in the Greek alphabet). This was one of the first Skopos Collections.

The range consisted of 10 drape designs, aimed at the hospitality market, with large, bold geometric printed shapes and simplistic two-tone contrast. **Duo** and **Tetra** embodied the 1970's style with their audacious use of flat shapes in repeating patterns. Deliberately bold, they were the perfect backdrop to the modern 1970's interior space – exuding a cool confidence and drama.

Designed, woven and hand-screen printed in Yorkshire, the original designs were hand made to order. Screens were produced in-house and colours, mixed by hand, were influenced by the interior trends of the day. The **Duo** and **Tetra** designs kick off our 50th Anniversary celebration with samples of the 4 skus available to order via our website. These revisited designs have been re-coloured and reworked to fall in-line with today's trends and the scales have been manipulated to work effectively across different soft furnishings, including cushions, upholstery and curtains.



Duo LA1
Linen



Petit Duo LA2
Shark



Tetra LA3
Aegean



Tetra LA4
Clay



Looking back: 1970's



FOR EXACT DESIGN SCALE AND COLOUR
PLEASE ORDER A SAMPLE

skoposfabrics.com/collections/50-years-of-skopos >

Delving into February, we look back only 14 years, to 2008. Our Vienna collection was born from a desire to create pattern which was graphic, bold and fun.

Sacher an organic horizontal hoop design, shouted retro vibes, and was ripe for reinvention. Revisiting this design, our team have played with texture, colour and direction to develop a vertical loop with a linen graze, placed onto muted gold and green. **Vienna Loop** is being added to our 50th anniversary collection and being sampled on our exquisite velvet blackout base-cloth, Sonno.

Joining Vienna Loop, to celebrate this anniversary in February, our next design has been named **Spa Days**. Originally a woven design, known as *Spa*, from our Nereus collection, *Spa* was a two-tone design, with a frolicking, playful line. Evolving this design, the creative team have married two contrasting-coloured lines on a simple background to create a printed design that works across all contract environments.



Vienna Loop LA5
Ochre



Vienna Loop LA6
Kelp



Spa Days LA7
Glade



Spa Days LA8
Resort



Looking back: 2008



FOR EXACT DESIGN SCALE AND COLOUR
PLEASE ORDER A SAMPLE

skoposfabrics.com/collections/50-years-of-skopos >

Welcoming the awakening of Spring, we cast our minds back to 2001 and our iconic Ocean Collection. The eclectic designs within Ocean brought the Ikat technique back to the forefront of fashion at the turn of the century.

The original *Pacific* design from Ocean was inspired by the traditional Ikat motifs. A three-colour design, *Pacific* was produced using meticulous hand and digital separation techniques, to keep the feathered edges and retain a woven appearance. The design was originally printed onto cotton/ linen fabric using the flatbed printing machines within our factory in the early part of the millennium.

As part of our March Anniversary celebration, **Ocean Ikat** is a modern evolution of the Pacific design. Using inspiration from the original artwork, the modern version takes the traditional motifs and amplifies the artisan feel. The second design, **Atlantic Stripe** has been inspired by the original design, Atlantic, from Ocean. An Ikat striped design, Atlantic was originally produced using flatbed production techniques and pigment inks. Emanating a traditional woven crafted stripe, the original artwork has been separated digitally to reveal the subtleties and fine details of the Ikat process.



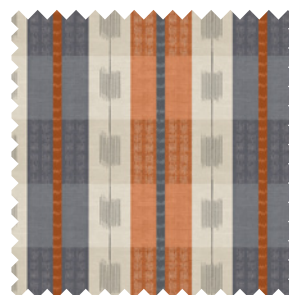
Ocean Ikat LA9
Shibori



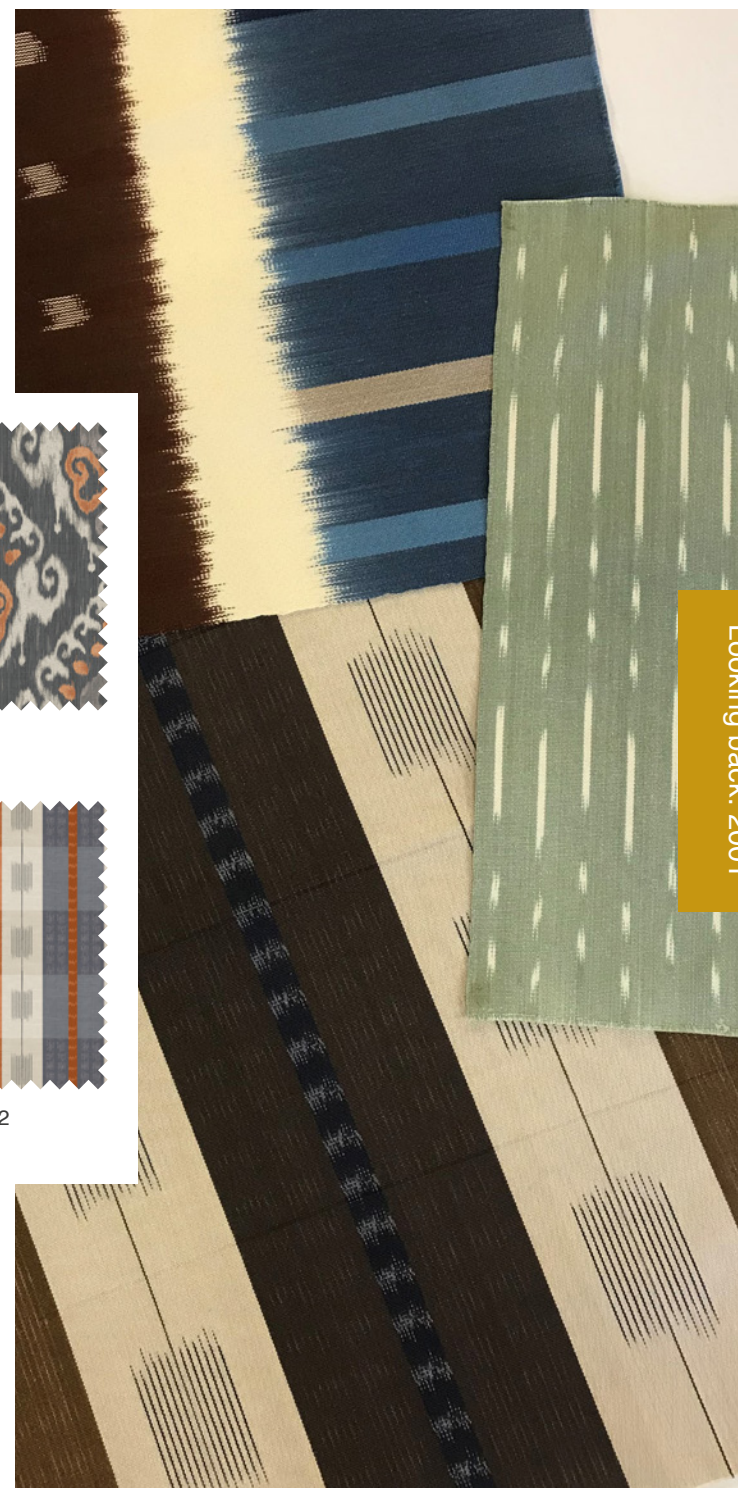
Ocean Ikat LA10
Jambalaya



Atlantic Stripe LA11
Saffron Yellow



Atlantic Stripe LA12
Paprika



Looking back: 2001



FOR EXACT DESIGN SCALE AND COLOUR
PLEASE ORDER A SAMPLE

skoposfabrics.com/collections/50-years-of-skopos >

Camomile Lawn (2006) was the perfect blend of classic glamour and contemporary sophistication launched under the Jamasque Label.

The label was inspired by historical themes, floral imagery, archive prints and weaves. “*Camelia*” was inspired by a surface printed floral wallpaper document dating back to the late 19th Century. The original design was large in scale and was interpreted for flatbed screen printing using hand separation techniques. Revisiting this design, Skopos have decreased the scale and looked at an interpretation which marries vintage colours and contemporary tones. **Vintage Camelia** is digitally printed, therefore in alignment with the original surface print technique, allowing the graphic block-printed outlines to remain. Vintage Camelia has also been re-imagined in a modern colour palette.

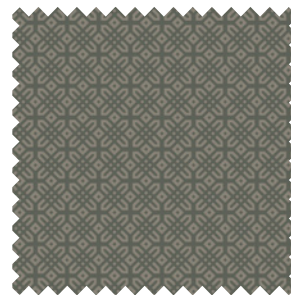
Delta was an early Skopos geometric design, originally launched back in the mid 70's. Known as “Design Number 14” it was part of a range of large-scale geometric designs, appearing in a brochure, aimed at the hotel and leisure market. The design has been reduced in size from the previous Delta design, translated into a soft tonal, two-colour design and digitally printed on our upholstery velvet, Varese, giving a luxurious twist to the original drape fabric.



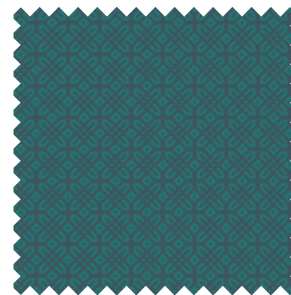
Vintage Camelia LA13
Sage



Vintage Camelia LA14
Jewel



Delta LA15
Mole



Delta LA16
Peacock



Looking back: 2006



**FOR EXACT DESIGN SCALE AND COLOUR
PLEASE ORDER A SAMPLE**

skoposfabrics.com/collections/50-years-of-skopos >

Our 50th Anniversary May design, Tea Garden is a re-incarnation of an original floral design within the Teahouse collection (2001), named “Birdsong”.

A calming floral story, The **Tea Garden** design has been produced in the same scale as the original. However, a move on from flatbed printing, modern separation and digital printing techniques have allowed the delicate quality of the original hand-painted artwork to be retained, capturing a beautiful tonality and adding greater delicacy back into the design.

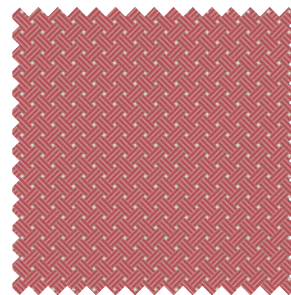
A simple, yet effective basketweave design, **Interlace** was originally launched in 1983. It was part of a collection of neat, structured designs, aimed at the hospitality market. Based on woven structures and originally launched in 7 colourways, **Interlace** has a timeless appeal, enabling it to be as relevant today as it was 40 years ago.



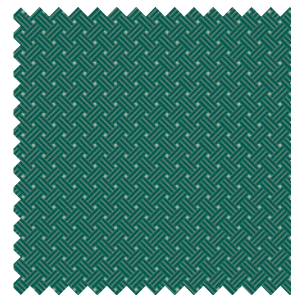
Tea Garden LA17
Watermelon



Tea Garden LA18
Blue Jay



Interlace LA19
Pomegranate



Interlace LA20
Spruce



FOR EXACT DESIGN SCALE AND COLOUR
PLEASE ORDER A SAMPLE

skoposfabrics.com/collections/50-years-of-skopos >

With echoes of the historic French Toile de Jouy style, our hero design for June descends from the *Liana Glade* design, originally a feature of our Versailles collection (1988).

Designs from Versailles were originally printed on-site in Yorkshire, using flatbed screen printing methods.

Now named **Liana**, this design for June has been digitally separated, enabling inclusion of the fine detail from the original painting and bringing the hand-made quality back in.

Liana brings a soft, colourful, impressionist pastoral landscape design into the Anniversary collection, tapping into the current aesthetic of pictorial, maximalist interiors.

Our second design for June, **Chanson**, started out as 'Song', part of the Verse collection (from 2008). Verse came under the umbrella of the Jamasque brand, printed originally on cotton, using flat-bed screen printing methods. Verse explored traditional and abstract floral designs with the support of a traditional stripe. The *Jamasque* label had a traditional bias, exploring historical themes, floral imagery, archive prints and weaves.



Liana LA21
Moonstone



Liana LA22
Aquarium



Chanson LA23
Ashen



Chanson LA24
Jasper



Looking back: 1988



FOR EXACT DESIGN SCALE AND COLOUR
PLEASE ORDER A SAMPLE

skoposfabrics.com/collections/50-years-of-skopos >

Directly emerging from the Halcyon collection (2011), as a development of the Shangri-la design, Halcyon Dawn is a two-colour design, depicting an abstract, wavy graphic flower.

Celebrating a self-indulgent hedonistic vibe, the **Halcyon** collection brought together a selection of woven, wide-width designs aimed at the hospitality market. Translating this design into a print, the team at Skopos have given the **Halcyon Dawn** design a linen-look textured background, retained the same impactful scale, and produced Petrol blue and Gooseberry options for transfer onto curtain, bedding and upholstery fabrics.

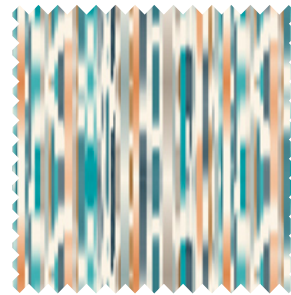
Our second design for July, **Foss**, started life as a design for digital print, in-house at Skopos. Never previously featuring within a collection, the archive design beautifully emphasises the benefits of digital printing, showing energy and movement with a blurred vertical stripe, with colours in complimentary shades. Foss has been produced in 2 colourways, picking up elegant tones of cyan and copper in one colourway and green, slates and blue tones in the other, with elegant contrast and reflective values in each combination.



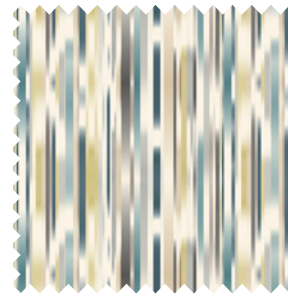
Halcyon Dawn LA25
Petrol



Halcyon Dawn LA26
Gooseberry



Foss LA27
Kingfisher



Foss LA28
Tundra



Looking back: 2011



FOR EXACT DESIGN SCALE AND COLOUR
PLEASE ORDER A SAMPLE

skoposfabrics.com/collections/50-years-of-skopos >

With a star appearance in two earlier collections, our first design for August is no stranger. Lily has taken centre-stage as a key part of both the Camomile Lawn (2006) and Heligan (2010) collections.

Developed to provide a more dramatic floral silhouette, this design has been placed onto a dark background with a second alternative in a softer neutral colourway, providing two contrasting print options for contract interiors. A soft, open flower, the new **Lilium** design conveys the movement of exotic floral heads swaying in a soft breeze. The modern digital print process has allowed the original design detail to shine through.

To accompany this design, our second design for August, **Guinevere**, started life as two different designs taken from original artwork. As a woven design within the Fable collection (2003), *Morgan* was a delicate viscose/linen fabric with a Paisley raised woven surface. As *Merlin*, in the Avalon collection (2006), the Paisley design became a screen-printed fabric. Simplifying this design a little, Guinevere, our design for August, beautifully emphasises the benefits of digital printing, allowing the detail of the printed line to come through on your choice of base-cloth.



Guinevere LA29
Diamond



Guinevere LA30
Dune



Lilium LA31
Wedgewood



Lilium LA32
Dusk



Looking back: 2006



FOR EXACT DESIGN SCALE AND COLOUR
PLEASE ORDER A SAMPLE

skoposfabrics.com/collections/50-years-of-skopos >

2006 saw the launch of the Flamingo collection. A bold, abstract graphic story, Flamingo brought 6 new designs to the Skopos portfolio.

Hero of the collection was the **Absinthe** design, with echoes of 60's psychedelia, the bold depiction of a flower head with a vertical background wave and central pop of colour shouted proud within contract spaces. Originally produced for screen printing, this design has been adapted to add in subtle details and textures into the leaves and petals, but still remaining true to the **Absinthe** design. Launching therefore with the same name – the 2 colourways will be produced initially on our Turin linen-look basecloth.

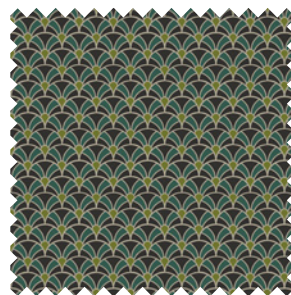
Working in tandem with Absinthe for September, we have the **Fuji** design. Born out of patterning seen in Japanese designs, the original inspiration came from our 2 tone *Edo* design within our Kimono collection (2008). Screen printed originally on fabrics with the appearance of silk, *Edo* gave a simple geometric option for curtains and bedding. With a change of scale and tweaks which saw the design more representative of a fan, the design has become a smaller graphic 4 colour design.



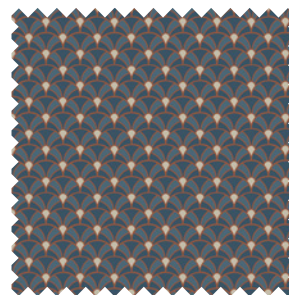
Absinthe LA33
Emerald



Absinthe LA34
Tabasco



Fuji LA35
Serpent



Fuji LA36
Denim



Looking back: 2006



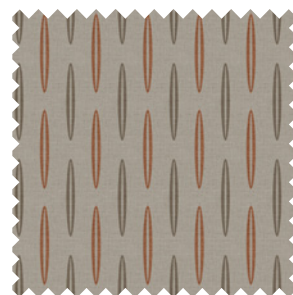
FOR EXACT DESIGN SCALE AND COLOUR
PLEASE ORDER A SAMPLE

skoposfabrics.com/collections/50-years-of-skopos >

Hugely successful for Skopos, with its first appearance in 2006, the Time collection brought together geometric outlines and more organic silhouettes, wet-printed onto our 'Cool Linen' cloth.

The linen/cotton mix base-cloth added natural beauty to the collection, and the series of graphic shapes kept the collection eye-catching, yet simple. Among the designs, *Silence* gave a feeling of retro calm, with its stretched ogee shape and vertical movement. Keeping the same scale and pattern, **Silenzio** has simply been given a linen background texture for our Anniversary collection and is offered in 2 colourways.

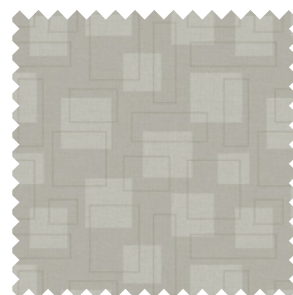
To accompanying Silenzio, we have adapted another design from Time, *Moment*, to inspire our second October design. Our new design, **Momentum**, brings together the angular graphic blocks of *Moment* with an additional outline to create a more dreamy, abstract design with more textural interest.



Silenzio LA37
Earth



Silenzio LA38
Surf



Momentum LA39
Shell



Momentum LA40
Twilight



Looking back: 2006



FOR EXACT DESIGN SCALE AND COLOUR
PLEASE ORDER A SAMPLE

skoposfabrics.com/collections/50-years-of-skopos >

Stepping into the cosiness of Winter, towards the end of our celebratory year, we look back to 1991 and the launch of the iconic *Baradaeus* collection.

A best-seller of the 90's, the designs adorned hotels and homes across the country. The style assisted a maximalist era, with designs presented on a crazed crackled ground for added texture, with a luxury outline in gold. With echos of William Morris and 'crewel' embroidery styles seen in the 17th century, the collection supported a classical interior scheme. 30 years later and we have revisited the striking *Jacobean Floral*. Concentrating on the silhouette, **Baradaeus Mist** takes on a ghostly form, with an organic texture overlaying the simplistic floral shapes. Colour has been simplified to pick out the beauty of the flower-heads and vines against a chalky ground.

To accompany **Baradaeus Mist** for 2022, in complete contrast, we have looked back only four years to our recent Oslo collection. **Henrick Stripe** directly links to our *Henrick design*, with a smaller pattern repeat and an overall stripe effect. Celebrating a Bauhaus flavour, the design shows a confident use of line and angles to create blocks of colour which work well in interior schemes.'



FOR EXACT DESIGN SCALE AND COLOUR
PLEASE ORDER A SAMPLE

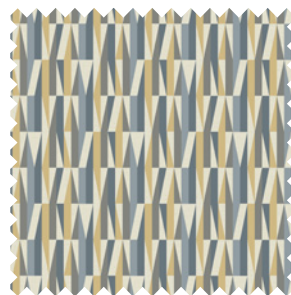
[skoposfabrics.com/collections/50-years-of-skopos >](https://skoposfabrics.com/collections/50-years-of-skopos)



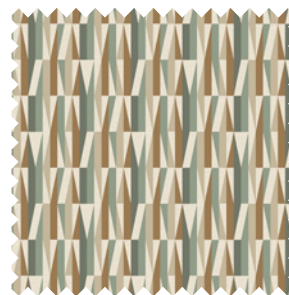
Baradaeus Mist LA41
Antique



Baradaeus Mist LA42
Patina



Henrick Stripe LA43
Beach



Henrick Stripe LA44
Oak



Rounding off this landmark year, we have taken the opportunity to bring one of Skopos' first ever designs again to the forefront. *Alpha 11* (design number 11) made its first appearance in the 1970s.

Effective in its simplicity, the design was a two-colour print featured in the original Skopos folder. The design team have revisited the relationship between positive and negative spaces to form an abstract graphic vertical stripe, tapping into the current trend for retro design and 1970s styling. Renamed as **Enteka** (Greek for eleven) this new design is being offered in 2 colourways for December.

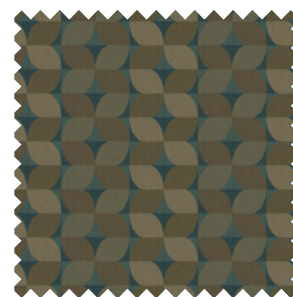
Partnering **Enteka** for December, our second design appears as a seasonally-apt icy medallion; influenced by a design within the Skopos Erddig & Elle collection from 2012, *Pompadour*. A collection of contrasting designs, Erddig & Elle was one of our last wet-printed collections, which fused the idea of wet print with modern digital printing techniques within one collection. Our newly evolved design, **Nevis**, injects elegance into the Anniversary collection in the form of a large-scale motif, perfect for curtains, cushions and bedding. Playing with colour and tones, the new designs have been coloured to fit with today's trends.'



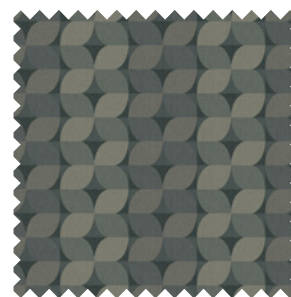
Nivis LA45
Fir Tree



Nivis LA46
Frost



Enteka LA47
Bronze



Enteka LA48
Mercury



FOR EXACT DESIGN SCALE AND COLOUR
PLEASE ORDER A SAMPLE

skoposfabrics.com/collections/50-years-of-skopos >



Our Anniversary print designs will now form a complete collection and become a key part of the Skopos print portfolio ongoing.

These 24 designs (48 fabrics in total) forge strong links to Skopos' history as an expert in textiles and soft furnishings for all contract interiors.



CHECK OUT THE 14 BASECLOTH OPTIONS
ON OUR WEBSITE AND ORDER SAMPLES.

Enjoy samples of our 50th Anniversary Collection.

Visit our website to view the whole collection and request further samples with our next day service.

50
skopos
years

t: 01924 436666 | e: sales@skopos.co.uk | w: skoposfabrics.com

50 Years of Design Excellence,
50 Years of Skopos.

skoposfabrics.com



50
skopos
years



Our 50th Anniversary brochure has been produced on recycled paper.