

Design: Sungai

Sungai is available in the colourways shown below (lift swatch). For scale, please refer to the attached sample, or order further samples via the website. Vertical Pattern Repeat, 34.25cm.
Sample swatch attached shows Sungai SSU06 Canal on Ashford Base-cloth.



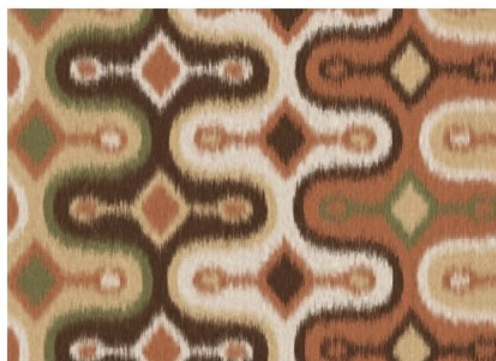
Sungai SSU01 Rolling Clouds (showing width: 34.25cm)



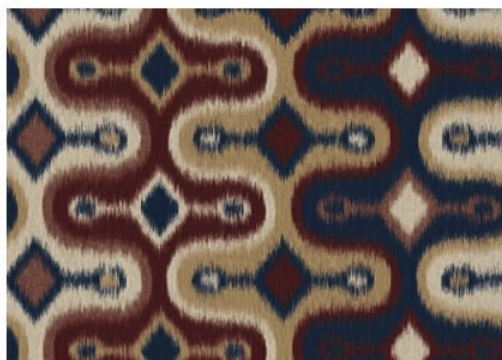
Sungai SSU02 Amazon (showing width: 34.25cm)



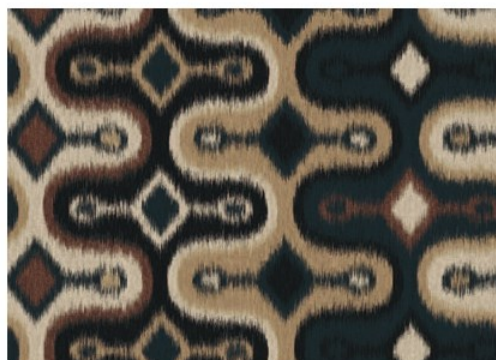
Sungai SSU03 Flamboyance (showing width: 34.25cm)



Sungai SSU04 Tangerine (showing width: 34.25cm)



Sungai SSU05 Rosella (showing width: 34.25cm)



Sungai SSU06 Canal (showing width: 34.25cm)

For exact colour reference, please order a sample: [skoposfabrics.com](https://www.skoposfabrics.com)



skopos

STUDIO

Design: Sungai



Image shows Sungai SSU04 Tangerine on headboard and Lienzo SL6 Espresso (back) and Plume SPL19 Pecan (front) on the cushions.

All of Skopos printed designs are available on a wide choice of base-cloths, including velvets, waterproof upholstery fabrics, blackout fabrics and linen-looks. For details, please refer to our website. Skopos can also provide bespoke colour options for a minimum order quantity. Please contact us for further details.

bespoke
by skopos
skoposfabrics.com/base-cloths



Suitable use:

