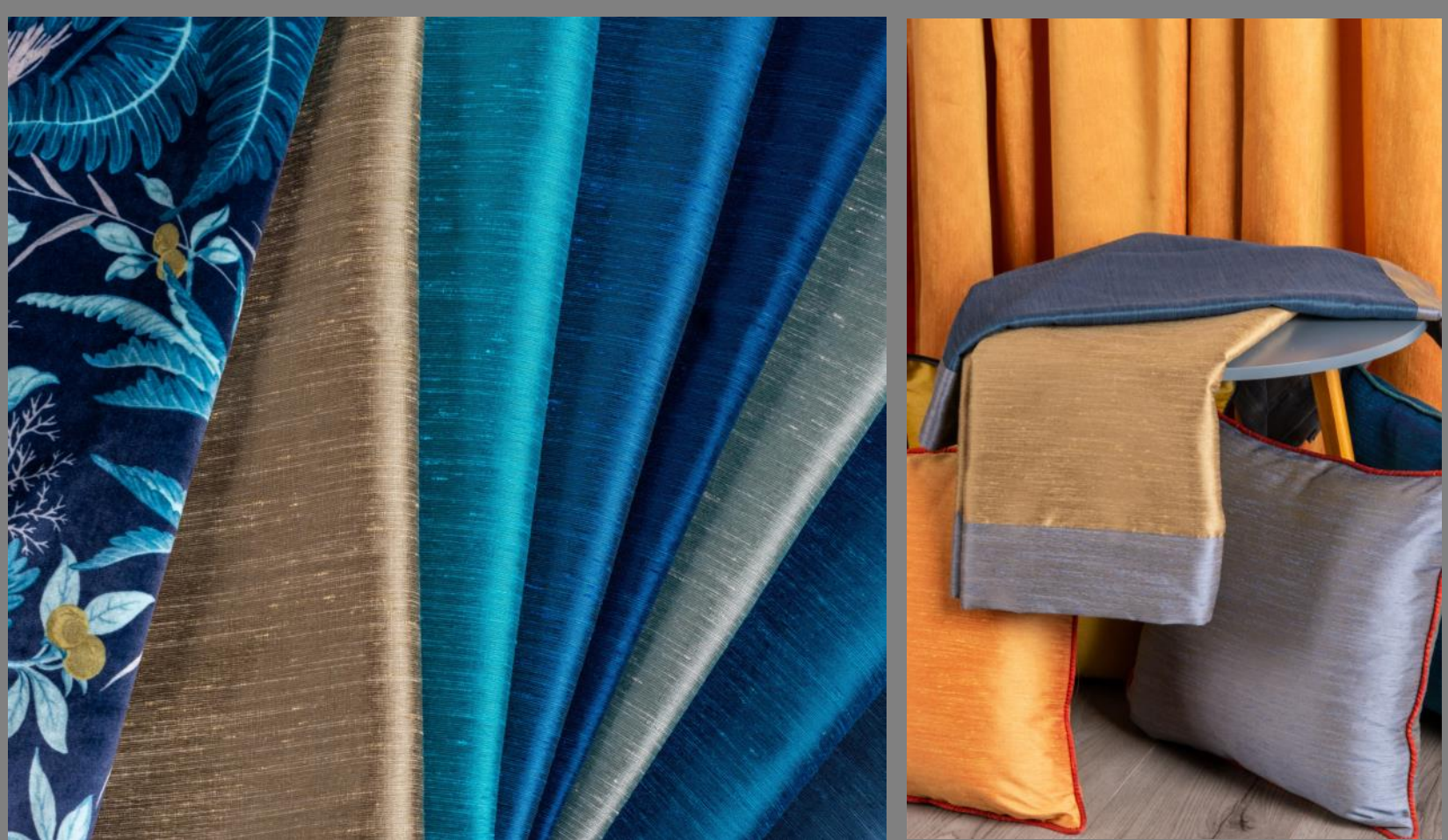


# Tarim

Elegant Slub-Silk Effect, Wide Width Fabric



Flame retardant fabric with the luxurious appearance of slub silk.  
For use across drapery, cushions and bedding.

From the ACCENTS range by Skopos

skopos



Tarim from the Accents Range by Skopos



Product swatches are displayed rail-roaded (width for length).



T19 Hazelnut



T17 Pear



T20 Blonde



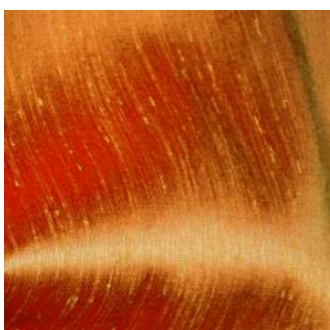
T6 Sand



T18 Wheat



T16 Avocado



T5 Crabapple



T3 Chilli



T4 Tobacco



T2 Sangria



Tarim from the Accents Range by Skopos



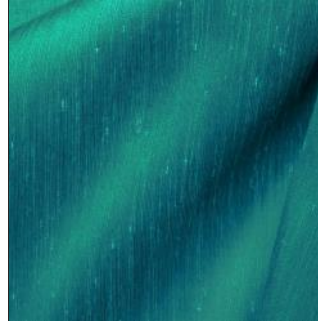
T8 Woad



T15 Peppermint



T25 Whale



T24 Oasis



T22 Jay



T21 Oxford



T23 Azure



T13 Falcon



T11 Mercury



T10 Cavern



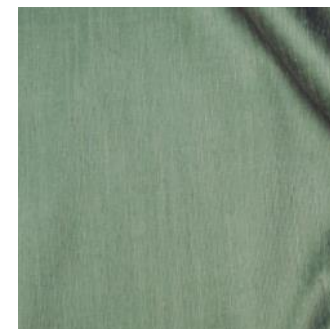
T14 Diamond



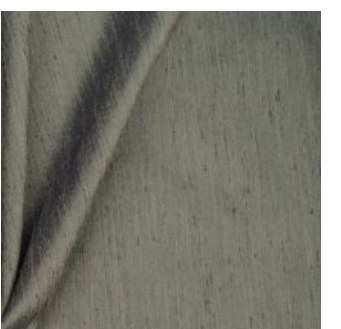
T1 Blackberry



T7 Rose



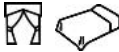

T12 Argent



T9 Graphite

# Tarim

## SPECIFICATIONS

DESIGN	COMPOSITION	SUITABLE USE	WEIGHT	WIDTH	REPEAT	CLEANING
DESSIN	COMPOSITION	UTILISATION	POIDS	LARGEUR	RACCORD	ENTRETIEN
DESIGN	ZUSAMMENSETZUNG	VERWENDUNG	GEWICHT	BREITE	PAPPORT	PFLEGE
DISEGNO	COMPOSIZIONE	UTILIZZO	PESO	LARGHEZZA	RAPPORTO	MANUTENZIONE
DISENO	COMPOSICION	USO	PESO	ANCHO	REPETICION	LAVADO
Tarim	100% Polyester FR		150gsm +/- 5%	315cm +/- 5%	0cm	

\* Avoid any contact with bleach based cleaning agents, as this can cause significant damage to the fabric.

## TESTING

DESIGN	CURTAIN FR	UPHOLSTERY FR	UPHOLSTERY GRADE	BEDDING FR
DESSIN	RIDEAUX FR	GARNITURE FR	QUALITE DE GARNITURE	COUCHAGE FR
DESIGN	VORHANG FR	BEZUGSSTOFF FR	BEZUGSSTOFFQUALITAT	BETTZEUG FR
DISEGNO	TENDA FR	IMBOTTITE FR	MATINDALE TEST	COPRILETTI FR
DISENO	CORTINA R	TAPICERA IG	GRADO TAPICERIA	ROPA DE CAMA IG
	BS 5867 Type B USA NFPA701 #1 IMO FTCP Part 7 FRENCH M1 ITALIAN CLASS 1 GERMAN B1	BS5852 Crib 5 EN1021.1 & 2 USA NFPA 260 IMO FTCP Part 8 BS7176 Low & Medium Hazard		BS 7175 IMO FTCP Part 9
Tarim	✓ - - - - -	N/A N/A N/A N/A N/A	N/A	✓ ✓

Please note that due to the natural slub effect of the fabric, variations in colour and a strié effect may occur.

**SALES OFFICE & EXPRESS SAMPLES SERVICE** Tel: + 44 (0) 1924 436666 Fax: + 44 (0) 1924 454575 Mon - Thurs 8.15am to 5.00pm, Fri 8.15am to 3.45pm

**SKOPOS FABRICS LTD** Head office, Studio & Showroom, Providence Mills, Earlsheaton, Dewsbury, West Yorkshire WF12 8HT, UK Tel: + 44 (0) 1924 465191 Fax: + 44 (0) 1924 454575 e-mail: sales@skopos.co.uk web: www.skoposfabrics.com We have sales representatives throughout the world. Please telephone + 44 (0) 1924 436666 for details of your nearest Agent.

NB: Digital colour swatch for colour reference only. Sample cutting must be referred to prior to specification.

It is the contractor's responsibility to ensure all cleaning instructions are passed onto the end user.

All copyright, design rights and intellectual property rights existing in our designs and products and in the images, text and design of this pattern card will remain the property of Skopos Fabrics Ltd. Any infringement of these rights is actionable in law and will be pursued vigorously.

We are constantly striving to improve the quality of our products and services, also legislation, standards and test methods may dictate change within the lifetime of this pattern card: We therefore reserve the right to alter our specifications accordingly. Please

skopos fabrics LTD.

